



Invest for High Rental Income

Enlivening the spirit of unmatched hospitality

Signature Resort calls for an investment closer to nature.

info@signatureresort.com.pk



INTRODUCTION

PAKISTAN'S PREMIUM THEME-BASED RESORT

Ingress into sublime living in our all-suite Resort, where opulent living, signature dining, unparalleled serenity and regal well-being await you.

SIGNATURE VILLAS

Elegant villas are available at Signature Resort amid breathtaking mountain views. Our three different villa styles each offer special high-end features. Private pools, saunas, and Jacuzzis

Our opulent amenities and friendly living spaces are found in our 1, 2, and 3-bedroom villas, which range in size from 1900 to 2600 square feet and guarantee luxury living.



1, 2 & 3 Bed Villas



Villa Sizes
1900 Sq. Ft To
2600 Sq. Ft



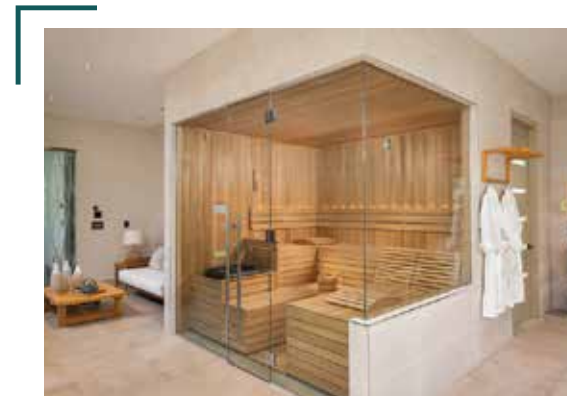
Zero Tree Cutting



PERSONALIZED
JACUZZI VILLA



PERSONALIZED
SWIMMING POOL VILLA



PERSONALIZED
SAUNA VILLA



STANDARD
VILLAS



SIGNATURE
RESORT

Serviced Villas in New Muree

LOCATION

A 5-star resort hotel at a futuristic location
 Our lavishly designed Resort is a truly luxurious destination making your stays memorable for a lifetime.



0 km Tourism Expressway



Just 45 Min from Islamabad



6 km Murree Expressway



Patriata Top, New Murree



6000 ft above sea level



Snow Covered Mountain Peaks



Gloria Jeans 05 km



Second Cup 05 km



OPTP 05 km

Invest & get 1% Rent Free Stays
ROI up-to 35% Annually

SIGNATURE RESORT

An opulent address where dreams come true

FEATURES

Elevate your lifestyle with refined luxury at Signature Villas. From bespoke interiors to stunning landscapes, experience the epitome of luxury living at its finest.



Rental-based Villas



Fully Furnished Villas



Every Villa is Corner Villa



Luxury suites



Infinity pools



Ballroom



Premium Shuttle service



Health club



Revolving restaurant



Corporate floor



Valet parking



Entertainment



Lavish Washrooms and Interior



Every villa has a 360 Degree Mountain Views



Shared Based Investment

INVEST RS. 28,000 PER SQ. FT.

& start earning a monthly profit of 1% through Rental Income Immediately